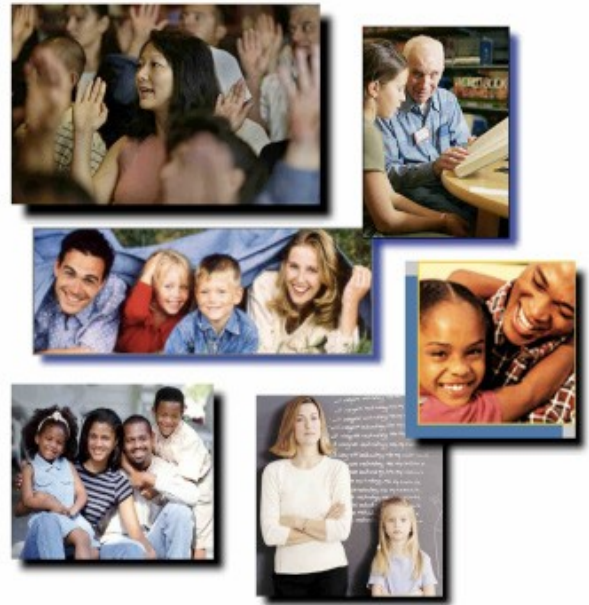


The Six Slices of Parental Involvement™



Project Appleseed
the national campaign for public school improvement



The Carson Middle School
Parental Involvement Report Card

Front and Back Master Copies Set
Printer & Copier for Two-Sided Letter
Paper 8 1/2



Carson Middle School Parental Involvement Report Cardtm

The following questions are based on the Six Slices of Parental Involvement and are intended to help parents rate their contributions to their child's success at school. Research indicates that students are more successful when parents are involved in their child's education. Use these 30 questions as a guide to discover some of the ways that you can help your child at home and at school. Simply check your answer to the following questions and then total your responses using the instructions at the end of The Report Card.



How well do you support your child's learning?

Parenting

1. Have you identified a regular time and place in your home for your child to do his/her homework? Yes ___ No ___
2. Do you monitor your child's homework? Yes ___ No ___
3. Do you monitor your child's television viewing habits? Yes ___ No ___
4. Do you ensure that your child has excellent attendance at school? Yes ___ No ___
5. Have you discussed with your child the importance of a good education? Yes ___ No ___
6. Did you attend Open House or Back To School Night at your child's school? Yes ___ No ___
7. Do you support and reinforce the school's discipline plan? Yes ___ No ___
8. Do you support your child's learning by providing nutritious meals and adequate time for sleep? Yes ___ No ___

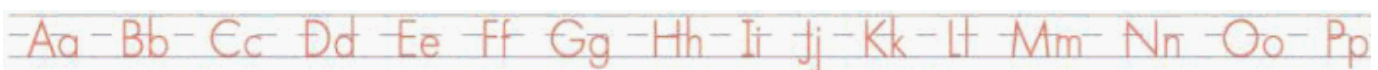
Learning at Home

9. Do you read to your young child? If your child is older, do you encourage reading by paying attention to what your child reads, as well as how often he/she reads? Yes ___ No ___
10. Do you hold your child responsible for completing all assignments on time and to the best of his/her ability? Yes ___ No ___
11. Are you knowledgeable about what information and skills your child should master at his/her grade level or in his/her subject areas? Yes ___ No ___

How involved are you with your child's schools?

Volunteering

12. Did you sign a written Parental Involvement Pledge and volunteer to help teachers, administrators, students and other parents? Yes ___ No ___
13. Were you a class parent, telephone tree coordinator, or a volunteer who provided parents with needed information? Yes ___ No ___
14. Were you a part of parent patrols or other activities to increase the safety and operation of your child's school and programs? Yes ___ No ___



Decision Making

15. Have you attended at least one PTA, PTO or other support group meeting this year? Yes ___ No ___
16. Have you worked on school-based management committees, district level councils and/or committees on issues concerning your schools? Yes ___ No ___
17. Did you assist in providing information on school or local district elections for school representatives? Yes ___ No ___

Community Involvement

18. Have you attended at least one school program? (i.e. award assembly, play/performance, athletic event or school party?) Yes ___ No ___
19. Are you a mode of "good sportsmanship" when attending school events? Yes ___ No ___
20. Do you insist that your child exhibit good sportsmanship at all times? Yes ___ No ___
21. Do you encourage your child to participate in volunteer projects in the community? Yes ___ No ___

How familiar are you with school information?

Communicating

22. Have you read the student code of conduct and/or discipline policy? Yes ___ No ___
23. Do you regularly read the school newsletter? Yes ___ No ___
24. Are you familiar with the extra services provided at your child's school? (i.e. speech therapy, resource help for gifted students, counseling) Yes ___ No ___
25. Do you make yourself available for conferences requested by your child's teacher? Yes ___ No ___
26. Have you had at least one parent teacher conference with the teacher(s) of your child? Yes ___ No ___
27. Do you initiate contact with your child's teacher or principal just to show your support? Yes ___ No ___
28. Are you aware of your child's academic strengths and weaknesses? Yes ___ No ___
29. Do you ensure that your takes courses to prepare him/her for a chosen career path? Yes ___ No ___
30. Are you familiar with the grading scale used on your child's report card? Yes ___ No ___

TOTAL: Yes ___ No ___

How Did You Score?

INSTRUCTIONS:

Now go back and count the boxes checked 'Yes' and then add them up to get your score!

21 – 30: EXCELLENT! Congratulations! You are a strong partner in your child's education!

10 – 20: GOOD! Yes! You are making wonderful contributions to your child's education but there are even more ways that can help!

0 – 9: NEEDS IMPROVEMENT! Your school and child needs your help! Your child's success at school might be increased if you were able to help more!